



Port
Adelaide
Enfield

SALA

guide

1-31 August 2015

SPECIAL EVENTS

CURRENT/Port Adelaide Village Launch

Opening night party for Port Adelaide Village exhibitions. Official opening and launch of Port Adelaide Enfield SALA Guide in Cats in the Loft at 7pm. Sponsored by Our Port – Renewal SA.

Friday 31 July 6-9pm

St Vincent Street & surrounds
'Port Adelaide Village'

Map Reference 20

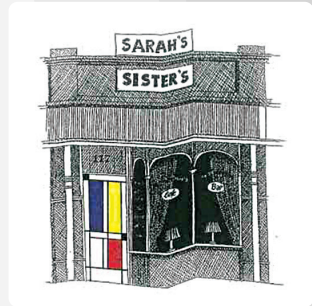
Community/Eco Hub Launch

To celebrate 10 years of sustainability leadership and official launch of the Community/Eco Hub. Featuring guest speakers, performers, displays and exhibition launch.

Sunday 2 August 4-8pm

Sarah's Sister's Sustainable Café
117 Semaphore Road, Semaphore

Map Reference 8



Stuart Gifford

Studio Potters SA Open Studio Launch

Raku firing, demonstrations, gallery opening and music.

Friday 7 August 6-9pm

Pottery on Fourth
1 Fourth Avenue, Klemzig

Map Reference 41



Studio Potters

Public Art Launch

Panpa Panpalya (meaning Conference in Kurna language) is part of the Mudlangga to Yertabulti Track and Loop Path. The public artwork was created by Artists Paul Herzich and Gerry McMahon, in consultation with Kurna Elder Lewis O'Brien. Launch will include a performance by dancers from Kurruru Youth Performing Arts.

Tuesday 25 August 4pm

River corner of Hart's Mill Complex
Mundy Street, Port Adelaide

Map Reference 14



Paul Herzich & Gerry McMahon

GUIDED TOURS

Current Tours

Guided tours of SALA exhibitions within the Port Adelaide Village.

Bookings Essential: Call the Port Adelaide Visitor Information Centre on 8405 6560

Every Sunday during August from 11am-12.30pm (subject to weather)

Leaving from Hart's Collective via Mundy Street, Port Adelaide

Map Reference 13



Rex Jacobs

OPEN STUDIOS

Rex Jacobs Ceramic Tile and Glass Art

A mix of quirky ceramic tile characters and stunning outback settings in glass on renovated windows. Displayed in the peaceful ambiance of a private garden.

5-30 August • Wednesday-Sunday 10am-4pm

Rex Jacobs Ceramic and Glass Art

22 Jolly Avenue, Northfield

Map Reference 38

Studio Potters SA Open Studio

Wheel throwing and hand building displays and gallery open for sales.

7-9 August • Friday 6-9pm

Saturday-Sunday 12-4pm

Pottery on Fourth

1 Fourth Avenue, Klemzig

Map Reference 41



Studio Potters

EXHIBITIONS

Largs

A photographic celebration and exploration of Largs Bay by local residents - a mother and daughter.

Wednesday-Saturday 9am-9pm

Sunday 9am-4pm

Queenies Store

9 Jetty Road, Largs Bay

Map Reference 1

CrossOver

A mixing and melding of styles mediums imagery and disciplines by Kath Vernon and Clancy Warner that blurs the lines of animal/human wood/metal print/sculpture function/form.

Thursday-Sunday 11am-4pm

Firgun and Fiire: Gallery and Studio

20 Jetty Road, Largs Bay

Map Reference 2



Clancy Warner

The Beauty of Historical Port Adelaide

Photographs of historical Port Adelaide by Brad Morris.

Semaphore Library

14 Semaphore Road, Semaphore

Map Reference 3



Brad Morris

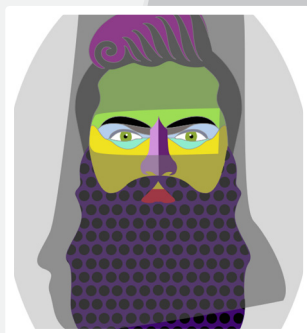
Vox Pop

Wearable art jewellery inspired by the Pop Art movement and modern news media by Moana Colmer.

Semaphore Library

14 Semaphore Road, Semaphore

Map Reference 3



Moana Colmer



Mandi Glynn-Jones

Portraits and Patterns

A unique collection of patterned portraits and images by Mandi Glynn-Jones.

23 July-31 August

Monday-Sunday 7am-5.30pm

Swedish Tarts Café

40 Semaphore Road, Semaphore

Map Reference 4

Utensils

Sandy Elverd, who has lived all of her life on Le Fevre Peninsula, showcases her basketry techniques combining sculpture and local grasses.

Monday-Sunday 9am-5.30pm

Corner Store on Semaphore

52 Semaphore Road, Semaphore

Map Reference 5



Sandy Elverd

Upcycle

Reclaimed Recycled Repurposed to Relove by Sue McKenzie.

Opening Friday 7 August 6-9pm

Monday-Saturday 9am-5pm

Sunday 10am-5pm

Xanadu Semaphore

58 Semaphore Road, Semaphore

Map Reference 6



Sue McKenzie

The Garden

A pop up exhibition by Michael Cronin that will excite your colour palette with different works that are full of texture and colour that will draw you in.

Every Saturday during August

11am-4pm

The Garden

98 Semaphore Road, Semaphore

Map Reference 7



Michael Cronin

The Art of Sustainability

Infographic exhibition by Stuart Gifford to celebrate 10 years of sustainability leadership and launch the café as a Community/Eco Hub.

Sunday 2 August 4-8pm

Monday-Sunday 10am-3pm

Sarah's Sister's Sustainable Café
117 Semaphore Road, Semaphore
Map Reference 8



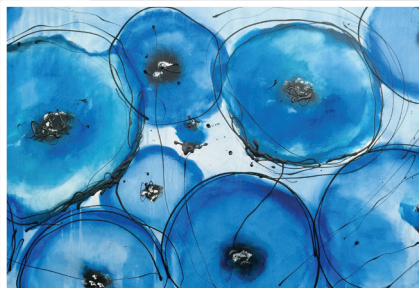
Dot Jeffries

Imagination

A collection of large bold and colourful artwork inspired by life on the peninsula by Mark Lobert.

Monday-Sunday 8am-4pm

The Red Mill Bakehouse
139 Bower Road, Ethelton
Map Reference 9



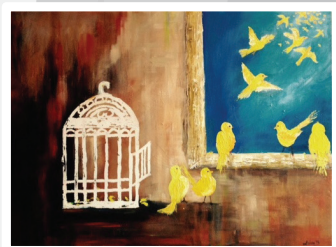
Mark Lobert

Escape

Paintings by Linda Buttfeld allow us to escape by the emotions they invoke. They provide an escape from everyday life and an outlet for feelings and emotions.

Tuesday-Sunday 12-3pm and 6-9pm

Portobello, Waterfront
1-2 Tarni Court, New Port
Map Reference 10



Linda Buttfeld

10acity

2D and 3D artworks in an exciting mix of medias and styles by Port Adelaide Artist Forum (PAAF) Artists celebrating a tenacious 10 years creating wonderful art within the Port Adelaide community.

7-30 August Friday-Sunday 11am-4pm

Gallery Yampu
1 Jenkins Street, Birkenhead
Map Reference 11



Ned Bajic

Window Gallery

Work commissioned by Our Port – Renewal SA.

Packing Shed, Hart's Mill Complex

Mundy Street, Port Adelaide

Map Reference 12



Ruth Wilson

Guise is my Sleeve

Luminous TinType photographs by Ruth Wilson; from one position rich with colour from another filled with bleak greys; describe the changing nature of a personal perception of guise.

Tuesday-Sunday 9am-3pm

Hart's Collective

Via Mundy Street, 'Port Adelaide Village'

Map Reference 13

Peninsula Station

Photographer Mark Baldock captures the industrial work life landmarks and iconic heritage of Port Adelaide and Semaphore with several 'wharfscape' images.

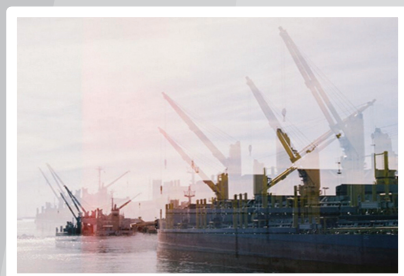
Monday-Saturday 10am-late

Sunday 8.30am-3pm

British Hotel

13 North Parade, Port Adelaide

Map Reference 15



Mark Baldock

Photo Mania 2

The ultimate all inclusive photographic competition and exhibition. 10 topics 10 photographs taken on July 4 and 5 - part race part creative challenge.

3-31 August Monday-Friday 8.30am-5pm

Port Adelaide Enfield Civic Centre

163 St Vincent Street, Port Adelaide

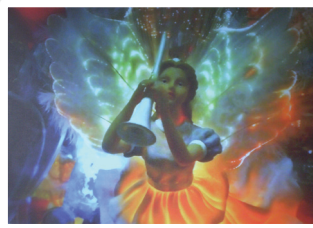
Map Reference 16



Photo Mania 2

James Levett

Photography by James Levett.
Port Adelaide Library
2 Church Street, Port Adelaide
Map Reference 17



James Levett

Photosynthesis

An exhibition of botanical photographs
by Danica Gacesa McLean.

Thursday-Saturday 10am-1pm
Sunday 11am-4pm

The Darkroom
154 St Vincent Street, Port Adelaide
Map Reference 18



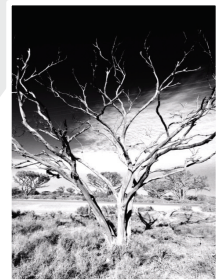
Danica Gacesa McLean

Elemental

Artistic interpretations of the Australian
outback including or featuring exposure
to the elements of fire water earth and air.

Opening Friday 31 July 6-9pm Monday-Friday
9am-4pm Saturday-Sunday 10am-4pm

Red Lime Shack
158 St Vincent Street, Port Adelaide
Map Reference 19



Steph Taylor

i Hart iconic Port Adelaide

The much loved Hart's Mill and adjacent buildings
on the Port River have long stood as symbols
of what was and what could be. Reminiscent
of vintage travel advertisements, this series of
illustrative works delight in the Port's unique
beauty and enchantment. #ihartportadelaide
#hartsmill #theflourshed.

Cats in the Loft Gallery supports SA Artists by
providing opportunities to exhibit, market and sell
work in a gallery setting. Multiple exhibits and
artists at gallery during SALA.

Opening Friday 31 July 6-9pm
Wednesday-Sunday 11am-4pm

Cats in the Loft, Level 1
168 St Vincent Street, 'Port Adelaide Village'
Map Reference 20



Jaqueline Barmantloo



Jaqueline Barmentloo

Magic Myth and Masquerade

Flights of fancy as experienced by the Amazing Dolly in her role as a vinyl toy by Jaqueline Barmentloo.

Opening Friday 31 July 6-9pm

Wednesday-Sunday 11am-4pm

Cats in the Loft, Level 1

168 St Vincent Street, 'Port Adelaide Village'

Map Reference 20

Floral Art

Illuminated art made from flowers by Andrea Christie.

Poppy and the Wallflowers

168 St Vincent Street, 'Port Adelaide Village'

Map Reference 21



Andrea Christie

Portrait of Alan

Moving image portrait of local visual artist and poet Alan Kelly.

Film Buff Central

St Vincent Street, 'Port Adelaide Village'

Map Reference 22

Youth Arts Festival 2015

A brilliantly diverse multicultural exhibition of Years 10-12 Art Students from eight local schools.

1-16 August Monday-Sunday 11am-4pm

Black Diamond Gallery

66 Commercial Road, 'Port Adelaide Village'

Map Reference 23

stART at the Port

An exhibition with a hint of history that showcases the talent and diversity of the art of the Port Community Art Centre members.

22 August – 6 September

Monday-Sunday 11am-4pm

Black Diamond Gallery

66 Commercial Road, 'Port Adelaide Village'

Map Reference 23



Youth Arts Festival 2015

Port Projector

A range of images by SALA Artists.

Dusk until late

62 Commercial Road, 'Port Adelaide Village'

Map Reference 24

The Adelaide Miniaturist and The Adventurers

A small exhibition of the Adelaide Miniaturist's Port Adelaide scenes in maple syrup bottles, nautical paintings and ceramics. Plus textiles and jewellery by The Adventurers.

Wednesday-Saturday 11am-3pm

116 Lipson Street, Port Adelaide

Map Reference 25

Inner Links

An exhibition of artworks made by young people attending the Flexicentre School in Kilburn.

17-31 August Monday-Thursday 10am-2pm

Youth Space, 20 Divett Street, Port Adelaide

Map Reference 26

Upstairs

Selected black and white ink drawings and oil paintings by Peter Thompson of scenes in and around the Port.

Opening Friday 7 August 6-8pm

Monday-Sunday 9am-12midnight

Port Dock Brewery Hotel

10 Todd Street, Port Adelaide

Map Reference 27

Wonderwalls

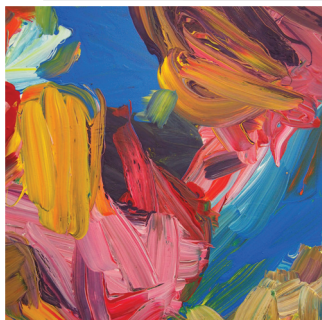
Outdoor street art exhibition featuring large scale works by international, national and local artists including Etam Cru (Poland) Askew One and Elliot Francis Stewart (NZ), Guido van Helton, Vans the Omega, KAB101, Order 55, Smug One. See www.portenf.sa.gov.au/wonderwalls for map.

Various locations, 'Port Adelaide Village'

Map Reference 28



The Adelaide Miniaturist



Inner Links



Peter Thompson



Etam Cru



Tony Kearney

From Within

A photographic exhibition by two local artists Tony Kearney and Trevor Wren depicting personal views of the Port's interiors and exteriors over the years.

Opening Friday 31 July 6-9pm Monday-Friday 8am-3pm Saturday 9am-2pm

Dutch Coffee Lab, Shop 5

255 St Vincent Street, 'Port Adelaide Village'

Map Reference 29



Nancy Forrester

Gone to Seed

An artist's field guide to the natural world. A stunning mix of abstract and representative art showing the changing aspects of nature by Nancy Forrester, Jackie Fuller, Kathy Harrison and Craigh Marsden.

Opening Friday 31 July 6-9pm Thursday-Sunday 11am-5pm

Jackalope Gallery

19 Calton Street, 'Port Adelaide Village'

Map Reference 30



Stu Pagdin

Claws and Jaws

A collective exhibition by some of SA's most talented and artistically inspiring tattoo artists - Jamie Angus, Jack Belometti, Sam Cole, Aeden Cooper, Amy Gellard, Jess Hannigan, Simone Hede, Parker Lyas, Pablo Mascia, Kelly Mckinnon, Dan Millar, Stu Pagdin, Jayden Pengilly, Chris Pengilly, Mat Schultz, Tom Tait, Caitlin Thomas.

Opening Friday 31 July 6-9pm Monday-Friday 9am-5pm Saturday 9am-4pm Sunday 11am-4pm

Black Diamond Tattoo

216 St Vincent Street, 'Port Adelaide Village'

Map Reference 31

Wasted?

One man's trash is another woman's treasure. A rare glimpse into the lived experience of mundane furniture and those who gave them away by Artists Delana Carbone, Laura Davids and Alex Perisic.

Opening Friday 31 July 6-9pm

Monday-Sunday 11am-5pm

Shake and Style

81 Commercial Road, 'Port Adelaide Village'

Map Reference 32



Shake and Style

Works by Brad

Various photographic works by Brad Morris.

Opening Friday 31 July 6-9pm

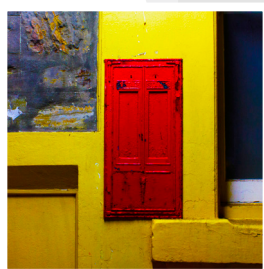
Monday-Friday 10am-4pm

Saturday 11am-8pm Sunday 11am-5pm

ASSP Gallery/Exhibitions, Shop 3

70 Commercial Road, 'Port Adelaide Village'

Map Reference 33



Brad Morris

Ngarrindjeri Stories by Cedric Varcoe

Narangga Ngarrindjeri Artist Cedric Varcoe exercises his unique and expressive painting style to share his knowledge of various Ngarrindjeri dreaming stories.

Monday-Friday 9am-5pm Saturday 10am-3pm

Better World Arts

144 Commercial Road, Port Adelaide

Map Reference 34



Cedric Varcoe

Collective Dreams

Tanya Ainsworth is a second year Visual Arts Student at UniSA studying Painting and Photography.

Tanya enjoys abstract, expressive painting, colour exploration and emotional photography. Her influences include Edgar Degas, Gerhard Richter and Irving Penn.

Until 24 August Monday-Friday 9am-5pm

The Parks Theatre Gallery

46 Cowan Street, Angle Park

Map Reference 35



Tanya Ainsworth

Celebrating Women

An exhibition by Lynne Collins, Michelle Miller, Sally Perry, Dana Richards and Asta Stevenson - a group of inspiring and diverse artists ranging in age from 16-50 showcasing a celebration of the many remarkable qualities of women.

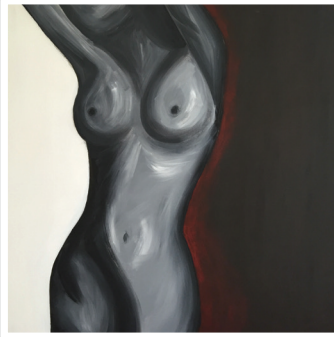
Monday-Saturday 9am-3am

Sunday 9am-12midnight

Albion Hotel

423 Churchill Road, Kilburn

Map Reference 36



Lynne Collins

Life Art

A collection of paintings featuring bright colour and experimental blending designed to create an atmosphere of life and wonder by Hayley Kroschel.

Enfield Library

1 Kensington Crescent, Enfield

Map Reference 37



Hayley Kroschel

Bittondi Prints

Recent work by members of the Bittondi Print Makers Association, which promotes the art of printmaking and holds workshops at its studio in Aberfoyle Park.

11 August–15 July

Monday-Sunday 9am-5pm

Hampstead Rehabilitation Centre

205-255 Hampstead Rd, Northfield

Map Reference 39



Bittondi Prints

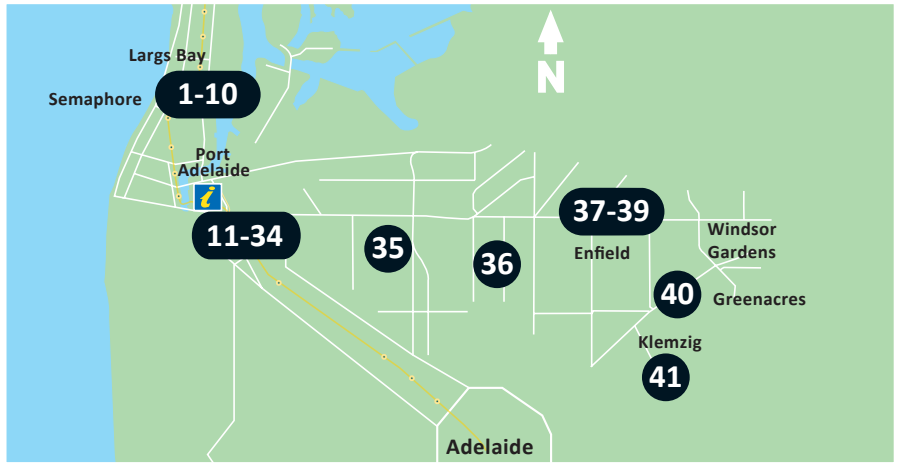
Indian Summer

The Indian Summer range of jewellery has been designed and created by local Adelaide Artist SonniLou using a mix of natural elements including metal glass wood and leather.

Greenacres Library

2 Fosters Road, Greenacres

Map Reference 40



Port Adelaide Enfield



Semaphore & Largs Bay



CITY OF
Port Adelaide Enfield

SALA

The City of Port Adelaide Enfield proudly supports artists through subsidising SALA (South Australian Living Artists) Festival registration fees for events, tours, open studios and exhibitions held within the Council area.

For further information about local attractions contact:

Port Adelaide Visitor Information Centre
66 Commercial Road, Port Adelaide
Open 7 days a week (closed Christmas Day)
Tel: 08 8405 6560
Website: www.portenf.sa.gov.au/tourism
Email: visitorinfo@portenf.sa.gov.au

For further information about arts and cultural activities and projects contact:
Arts & Cultural Development Officer
City of Port Adelaide Enfield
163 St Vincent St, Port Adelaide
Tel: 08 8405 6600
Website: www.portenf.sa.gov.au
Email: customer.service@portenf.sa.gov.au

Cover image supplied by Studio Potters SA